



- EMC shielded up to 200 V/m and 18 GHz
- Remotely controlled (Pelco-D)
- Speed control
- Soft start and stop
- Top, side or dual mounting options
- 32 programmable presets

EMC HARDENED PAN/TILT UNIT

The PT61 is a pan-/tilt unit for cameras designed for operation in EMC critical areas. The emission is very low and it can withstand field strengths of 200V/m up to 18GHz.

It uses a single 12V-DC power supply.

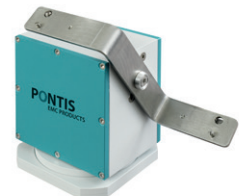
The PT61 can move in a wide range, both pan and tilt. To avoid mechanical damage there are adjustable switches inside the device.

The PT61 can be controlled via Pelco-D commands sent over RS485 from the camera or a Joystick.

When a camera is connected, the commands are sent from the camera controller via fibre optic to the camera.

There are also buttons at the back side of the PT61 with which the PT61 can be controlled locally.

The PT61 can carry the camera on top or on the side or in both positions. When used in side mode the it can handle heavier loads.



TECHNICAL DATA

ENVIRONMENT

EMC	200 V/m up to 18 GHz
-----	----------------------

MECHANICAL

External Dimensions	100 x 75 x 145 mm (L x W x H)
Maximum load	2 kg
Holder	Single double holder for one or two cameras or camera plus audio
Camera connector	Standard photo thread (1/4" UNC)
Pan movement	0 to 350 °
Tilt movement	+60 ° to -85 °
Limit switches	Adjustable
Speed	Variable
Start	Soft start
Positioning	32 programmable presets
Weight	1.750 kg

ELECTRICAL

Power supply	12 V, AC
Interface	RS485 (Pelco-P)

Prices and specifications are subject to change without notice!

PONTIS
EMC PRODUCTS
A BRAND OF AUDIOVO

PONTIS EMC Products designed and manufactured by:

Audiovo GmbH
Irrenloher Damm 30
92521 Schwarzenfeld
Germany

Phone +49(9435) 54 19-0
Fax +49(9435) 54 19-19
info@audiovo.com
www.audiovo.com

You can contact directly our local partners for sales and technical support



www.hvtechnologies.com



www.toyo.co.jp



zongkui.shao@pontis-emc.com